

CIB student chapter hosts Collective Sensemaking: First in a series of global fireside chats

Friday 14th August 2020, 17.00 – 18:00 AEST

The CIB Student Chapter at Western Sydney University in association with the [Centre for Smart Modern Construction](#) hosted the first in a series of live streamed fireside chats called 'Collective Sensemaking' on the theme 'the Great Reset – Resilience through Innovation'. The pandemic is being considered as a watershed moment for the digital transformation of businesses and the world is now ever more reliant on harnessing the power of digital models and collective intelligence to create new value and experiences.

The key highlights from the discussion:

- In the Great Reset, the part that innovation needs to play is managing the trade-off between the *resilience of our systems to vulnerability* and the *efficiency of our systems*.
- In the physical world, the world might potentially see changes in patterns of what people want out of *urban space*, in the digital space, there will arise a lot of tension between *privacy demands and social good demands* with a focus on 'trust' enabled through technology where Blockchain will emerge as a key technology.
- The pandemic has made AEC organisations question their deeply embedded structures and might enable some *long term systemic changes* around *adaptability and flexibility*.
- *Unalloyed technological enthusiasm* is not going to help us achieve our goals, *knowledge sharing, collaboration and learning from practice* might enable a natural *evolution* of the industry with respect to digitalisation, however, some actors might still be too slow to move and end up being completely overwhelmed by the digital *revolution*.
- The most important skillset for future grads is to be able to *train and re-learn*, using the time at university to not just take the right classes but to create a foundation towards becoming an *agile* actor.

Report by Priyadarshini Das, President and Amer Hijazi, Project Manager (Events)

Organising team - Buddhini Ginigaddara, Vice-President cum treasurer and Kasun Gunasekara, Project Manager (Promotions), CIB Student Chapter, Western Sydney University.

To watch the recording on YouTube, click [here](#).

The Panel



First Panellist:
Prof Kira Matus

Prof. Kira Matus' primary research focus is at the intersection of innovation, sustainability science, and public policy, focusing on sustainable production-consumption systems. A large portion of her research is on how policy interacts with the development and implementation of "green" technologies in supply chains. She researches how policy can incentivize innovation- but also at how innovation can feed-back into policy, and when new technologies allow for, and sometimes even demand, new approaches to policy on the part of public, private and civil society actors. She has a PhD in Public Policy from Harvard University, a SM in Technology and Policy from MIT, and a ScB in Chemistry from Brown University.

Profile: [Prof. Kira Matus, Hong Kong University of Science and Technology](#)



**Second Panellist:
Cristina Savian**

Cristina is the founder and managing director at BE-WISE, an international consultancy firm specialised in helping start-ups and SME to scale-up and bring new technology into the construction market. Cristina has over twenty years' experience in the civil engineering and technology industries and played a key role as transport manager of the Greenwich Park venue during the London 2012 Olympic Games. She then moved to work for a multinational leading technology company, Autodesk, covering several global roles as technical and commercial lead across Europe and America. Cristina holds an MBA from the University of Cambridge, a joint degree in Transport & Business Management from Imperial College London and UCL and a first class degree in Environmental Economics.

Profile: [Cristina Savian, BE-WISE](#)



**Third Panellist:
Prof Mike Kagioglou**

Prof Mike Kagioglou is Dean of Engineering at Western Sydney University in Australia, Provost of the Penrith Campus and Institutional strategy lead for the engagement of the University with Europe and the UK. Prof Mike was, until recently, Dean of Art, Design and Architecture at the University of Huddersfield and prior to that at the University of Salford where he was the Head of the School of Built Environment. Prof Mike's career spans Engineering, Manufacturing, Creativity, Design, Architecture and the Built Environment, engaged in inter and multi-disciplinary research at a global level. Prof Mike has taught in product design and development, manufacturing and production systems, lean construction/manufacturing/healthcare, requirements management, among other subject areas.

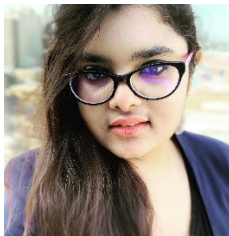
Profile: [Prof Mike Kagioglou, Western Sydney University](#)



**Fourth Panellist:
Prof Srinath Perera**

Prof Srinath Perera is the Director of the Centre for Smart Modern Construction and holds a personal chair in Built Environment and Construction Management at the Western Sydney University, Australia. He is a invited member of the CIB governing Board. He is a Fellow of the prestigious Royal Society of New South Wales and is a fellow of the Australian Institute of Building (AIB). He is a chartered Quantity Surveyor and a Project Manager with membership of both the Royal Institution of Chartered Surveyors (RICS), and Australian Institute of Quantity Surveyors (AIQS). His research spans across construction informatics, economics of sustainability, risk management, value management, life cycle costing and other areas of construction management.

Profile: [Prof. Srinath Perera, Western Sydney University](#)



**Moderator
Priyadarshini Das**

Priya is a doctoral researcher at the Centre for Smart Modern Construction, Western Sydney University. Her research aims at developing a capability maturity model for construction enterprises transforming in Industry 4.0. Prior to commencing her doctoral research, Priya worked for Indian construction giant Larsen and Toubro for over half a decade in Transportation Infrastructure Projects such as Highways, Runways, and Elevated Corridors and had a short stint with the US-based technology-driven Construction Start-Up Katterra. Her academic and professional pursuits have created the opportunity for her to understand the nuances of mega construction projects involving an array of stakeholders leading to complex and interdependent uncertainties.

Profile: [Priyadarshini Das, Western Sydney University](#)



**Moderator
Amer Hijazi**

Amer is a doctoral researcher at the Centre for Smart Modern Construction, Western Sydney University and is working on developing a methodology for integrating blockchain with BIM for construction supply chains. Amer holds a M.Sc. from the University of the West of England, Bristol; in BIM, Design Construction and Operation. Amer has had a decade long career in the AEC industry (UK and MENA region) focusing on making the BIM business case. Amer has worked with "Vision Network", Centre of Digital Built Britain (DBB), University of Cambridge on enabling AR/VR for Digital Built Britain. Amer aced all his modules with distinction for the prestigious Oxford Blockchain Strategy program.

Profile: [Amer Hijazi, Western Sydney University](#)